

SE200 Diagram

The SE200 is powered by a 12 volt car battery.
Battery is not included



Contents

Smart Electrochlorinator 200 (SE200)



Trouble Shooting

PROBLEM: BLINKING RED LIGHT
Low Battery



SOLUTION:
Charge Battery

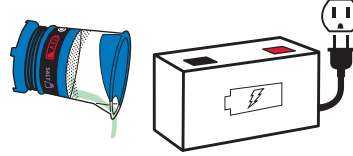


Chlorine OK!

PROBLEM: SOLID RED LIGHT
Dead Battery



SOLUTION:
Discard Chlorine and Charge Battery



PROBLEM: PURPLE LIGHT AND BEEP
Low Salt



SOLUTION #1:
Add more salt to Brine Solution and shake well



Pour Salt Brine out of SE200 and refill with new brine

Still Low Salt?

SOLUTION #2: Clean with vinegar by adding vinegar to reservoir and swirling around



PROBLEM: RED AND PURPLE LIGHTS BLINK
System Reset



SOLUTION:
Disconnect the device, Pour out salt brine, Wait 5 minutes, Refill with brine



1 Make Salt Brine



2 Battery



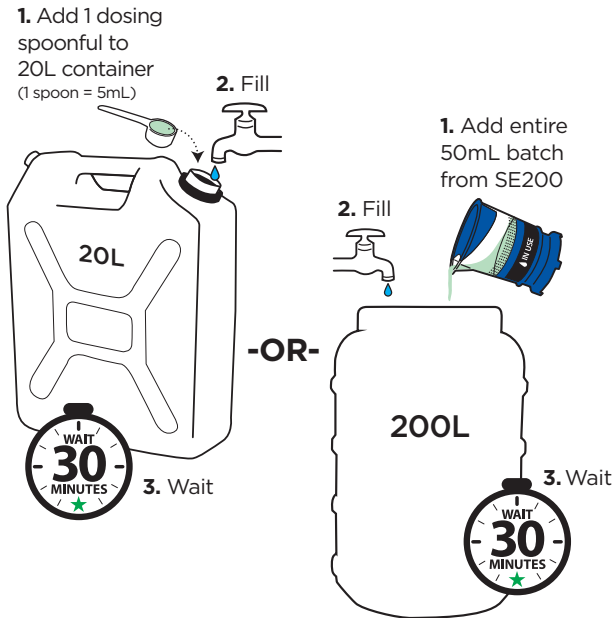
3 Fill SE200 with salt brine and press start



4 Chlorine Creation



5 Dose chlorine into drinking water storage container



Warnings



1. Do not drink chlorine directly from SE200. Dilute before drinking.



2. Do not get in eye.



3. Do not submerge in water.



4. Do not remove cover.



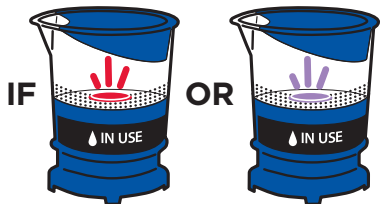
5. Do not put hot water in salt brine bottle.



6. Chlorine stains clothing.



7. Salt brine solution is the only liquid that will produce chlorine in the SE200.



NOT READY!
SEE TROUBLE SHOOTING!